

# TROMMEL



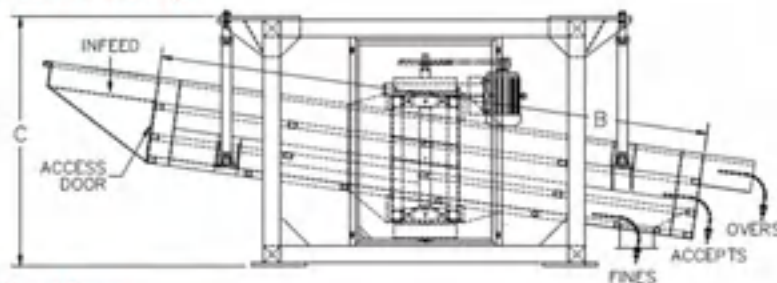
## Brief introduction

1. *Municipal Solid Waste Management Waste Recycling Machinery Trommel Screen overview:*

*Rotary drum screen (trommel screen) can screen the following materials: black earth, compost, organic waste, green waste, wood waste (bark, sawdust, woodchips etc), domestic refuse, municipal waste, recycled asphalt, concrete, slag coal, sand, gravel, sone, clay, alluvial gold sand and many other materials.*

2. *Advantages of Municipal Solid Waste Management Waste Recycling Machinery Trommel Screen:*

## Example Drawing



## Specification

Model	Power (kw)	Drum Diameter (mm)	Drum Length (mm)	Screen Size (mm)	Dimension (mm)
GTS1020	3	1000	2000	3_10	3000*1400*2145
GTS1225	4	1200	2500		3460*1400*2145
GTS1530	5.5	1500	3000		4460*1900*2620
GTS1545	7	1500	4500		5960*1900*3080
GTS1848	11	1800	4800		6500*2300*4000
GTS2055	15	2000	5500		7500*2500*4000