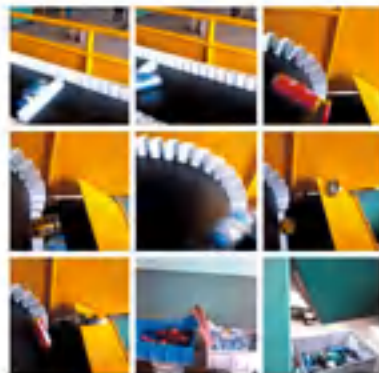
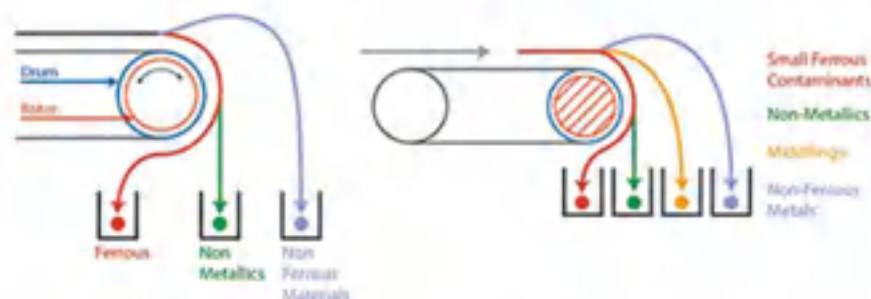
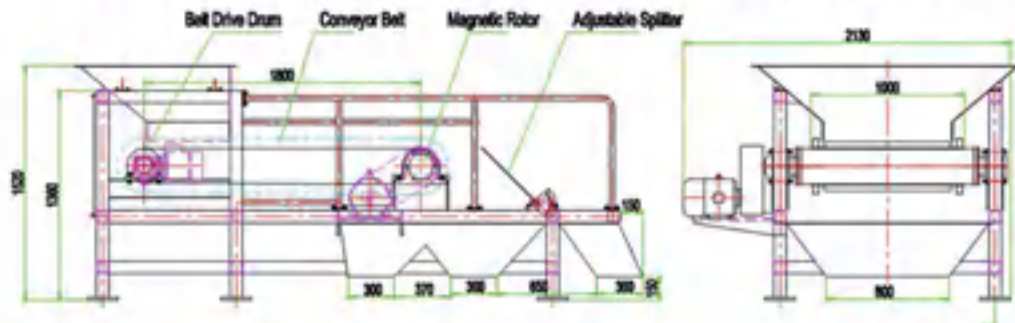


THREE CANS EDDY CURRENT SEPARATOR



Three Cans Sorter

The Can Sorter is specifically designed for the separation of non-ferrous beverage cans from dry recyclables. Can Sorters are low-cost alternatives to larger Eddy Current units for customers that have simple can sorting applications, which will not require high specifica-



	SGCS40	SGCS65	SGCS80	SGCS100
Diameter of rotor(mm)		500		
Rotor speed(r/min)	0-1600			
belt width(mm)	460	650	800	1000
belt speed(m/s)	0-2			
Producing capacity(t/m)	1~2	2~3	3~5	6~10
Motor power(kw)	3.0+0.75	4.0+1.1	5.5+1.5	7.5+1.5
Weight(kg)	1500	1800	2200	2500
Dimension L*W*L(mm)	3670*1500*2035	3670*1650*2035	3670*2000*2035	3670*2300*2035